

# INDUSTRIAL SPACE - 20,000 SQ. FT. AVAILABLE NOW



**ADLER**  
INDUSTRIAL

2100 NORTHLAND DR. | NAMPA, ID



- 20,000 SF
- 450 SF OF IMPROVED AREA
- INCLUDES ONE ACRE OF FENCED YARD
- ZONING: INDUSTRIAL IL
- POWER: 277/480V
- RAIL SPUR
- 5 GROUND LEVEL OVERHEAD DOORS

## DESCRIPTION

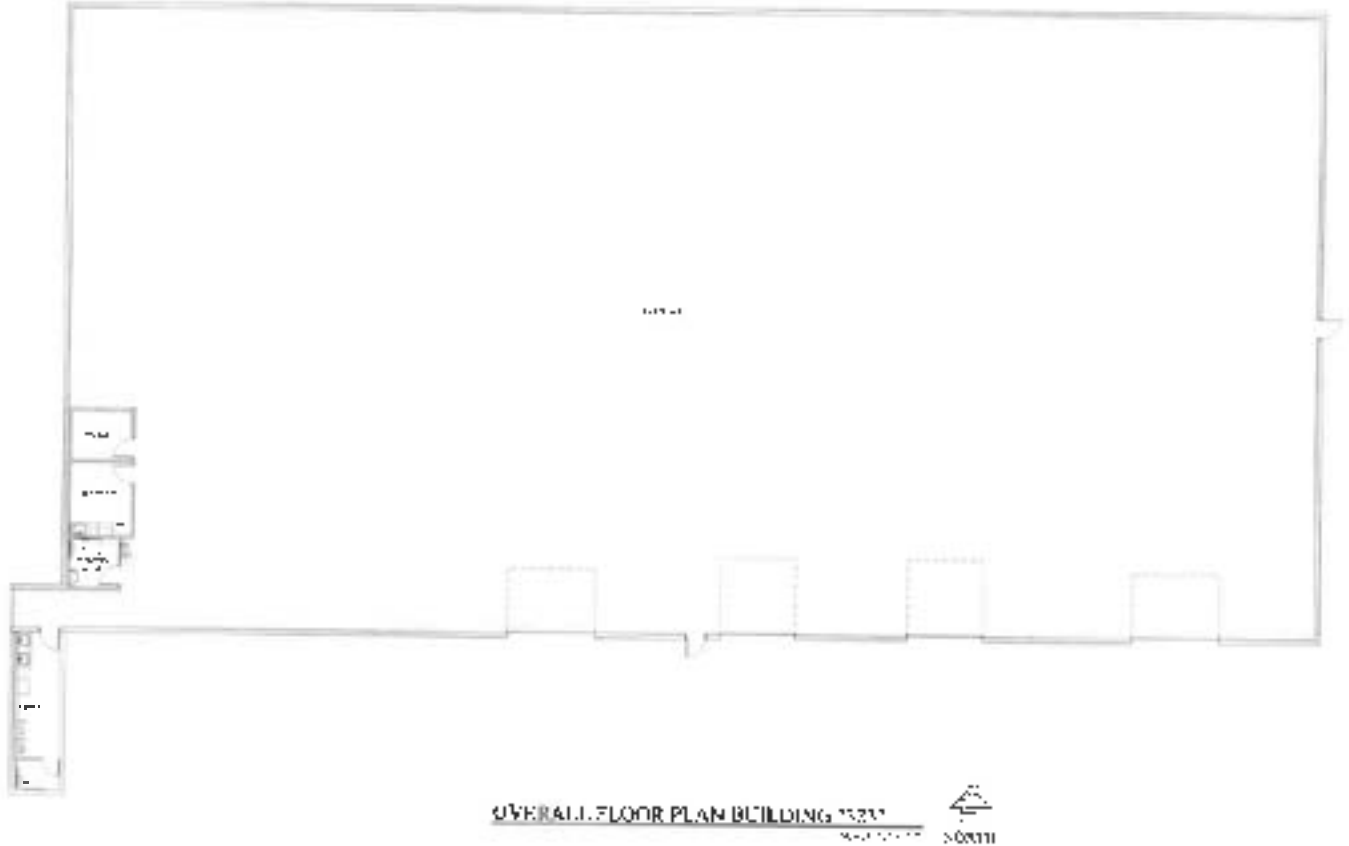
20,000 square feet of open manufacturing or storage space in a clear span pre-engineered steel building. Includes 1 acre of fenced yard with rail spur access. Ideally located less than one mile from the I-84 via the Franklin Blvd exit and in close proximity to Downtown Nampa. Improvements include a breakroom, restroom and office.

## CONTACT

### BRAD MILLER

10259 W. EMERALD STREET, SUITE 100 | BOISE, ID 83704  
PHONE: 208-506-7170 | EMAIL: [BMILLER@ADLER-INDUSTRIAL.COM](mailto:BMILLER@ADLER-INDUSTRIAL.COM)  
[WWW.ADLER-INDUSTRIAL.COM](http://WWW.ADLER-INDUSTRIAL.COM)

# 2100 NORTHLAND DR. | NAMPA, ID



- INCLUDES 1 ACRE FENCED YARD -  
- LESS THAN 1 MILE FROM FRANKLIN BLVD EXIT -



**CONTACT**

**BRAD MILLER**

10259 W. EMERALD STREET, SUITE 100 | BOISE, ID 83704  
PHONE: 208-506-7170 | EMAIL: BMILLER@ADLER-INDUSTRIAL.COM  
WWW.ADLER-INDUSTRIAL.COM

